

EH-3000 CONTROL

ELECTRONIC HAND ENGINE IDLE SPEED AND POSITION CONTROL

AT A GLANCE

- > PATENTED vSENSE™ NON-CONTACT SENSOR PROVIDES POSITION SENSING AND SWITCHING ACCURACY AND RELIABILITY
- > INNOVATIVE MODULAR DESIGN ALLOWS FOR INSTALLATION IN A WIDE RANGE OF APPLICATIONS AND CONFIGURATIONS
- > ROBUST DESIGN TESTED FOR RUGGED ENVIRONMENTS AND VEHICLES
- > ADJUSTABLE ACTUATING FORCE
- > ANALOG AND PWM SENSORS AVAILABLE
- > STANDARD KNOB, LEVER OR BASE VERSIONS AVAILABLE

PRODUCT DESCRIPTION

The EH-3000 Electronic Hand Engine Idle Speed and Position Control is the latest control to utilize Kongsberg Automotive's leading vSense sensor technology. Designed for the rigors of construction, agricultural and industrial vehicle control, the EH-3000 is intended for use with electronic engines as a hand engine idle speed and position control. Designed to provide ease of installation and mounting, flexibility of input mechanisms, and variability of angular movement, this product is adaptable for a wide range of electronic control applications requiring a robust, durable design. The compact, fully sealed unit offers extended service life in the harshest environments. With multiple sensor output options, the vSense non-contact sensor may be calibrated to meet the customer's exact requirements.

This device can be used as a stand alone product or it can be used in conjunction with other Kongsberg Automotive products to create a complete control system for virtually any type of heavy duty vehicle.



EH-3000 CONTROL

ELECTRONIC HAND ENGINE IDLE SPEED AND POSITION CONTROL



PRODUCT SPECIFICATIONS

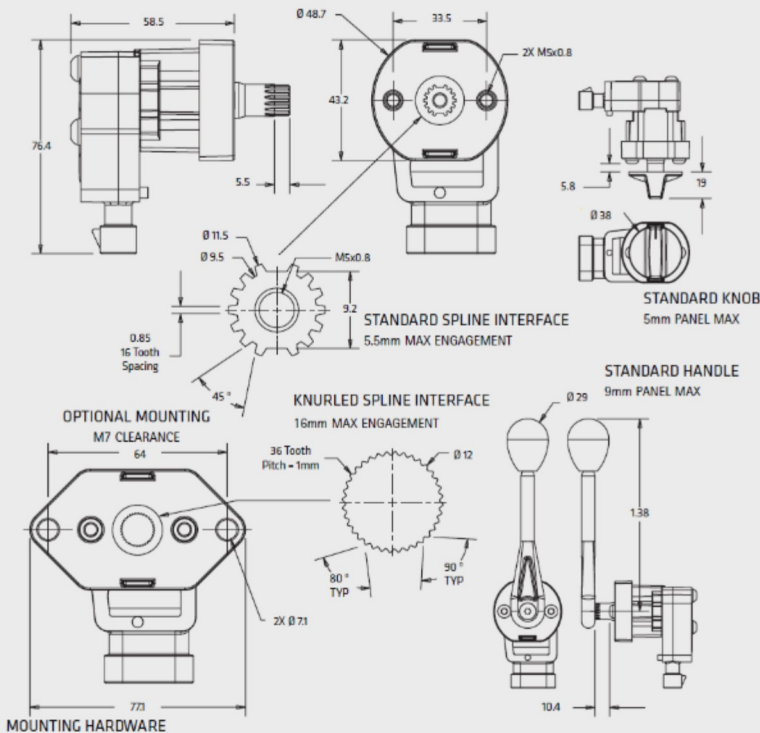
PARAMETERS	SPECIFICATIONS
OPERATING VOLTAGE	ANALOG 5V +/- 0.5V PWM 7.5 TO 32V
PRODUCT LIFE (FULL TRAVEL CYCLES)	500,000
OUTPUT RANGE (PROGRAMMABLE) WITHIN	MINIMUM > 7% OF SUPPLY VOLTAGE MAXIMUM < 90% OF SUPPLY VOLTAGE
TRAVEL ANGLE RANGE	90° AND 54° (STANDARD)
OPERATING TEMPERATURES	-40°C TO +85°C (-40°F TO +185°F)
STORAGE TEMPERATURE	-54°C TO +85°C (-165,2°F TO +185°F)
SALT SPRAY	96 HOURS
SOLID OBJECTS AND WATER INGRESS	SENSOR IP67 RATED
CONNECTOR	INTEGRATED METRI PACK (STANDARD) ALTERNATIVE CONNECTORS AVAILABLE
SPECIFICATION COMPLIANCES	ASTMB633; ASTMB117-97, SAEJ726, SAEJ1843, SAEJ1455, KA PS-462, PS- 00522
ENGINE COMPABILITY	• CATEPILLAR • CUMMINS • DAF • DAIM- LER • DETROIT DIESEL • DEUTZ • HINO • IVECO • MAN • MTU • NAVISTAR • PERKINS • SCANIA • SHANGHAIDIESEL • JOHN DEERE • KUBOTA • SISU DIESEL • VOLVO • WEICHAI
ENGINE INPUT OPTIONS	SINGLE ANALOG, DUAL ANALOG, SINGLE ANALOG W/IVS, PWM

FEATURES

- > ROBUST, DURABLE DESIGN
- > FACTORY SET FRICTION MECHANISM HOLDS POSITION RESISTANT TO VIBRATION
- > DYNAMIC IP67 SENSOR INDUSTRY LEADING CYCLE LIFE

OPTIONS

- > AVAILABLE WITH OR WITHOUT OPERATING LEVER OR DIAL
- > 60° OR 90° ROTATION
- > CUSTOMIZABLE MOUNTING OPTIONS AVAILABLE
- > ANALOG OR PWM SENSOR OUTPUT
- > 6-PIN INTEGRATED METRIPACK (STD)
- > 6-PIN DEUTSCH (HARNESS)
- > 3-PIN WEATHERPACK (HARNESS)
- > 3-PIN ROUND DEUTSCH (HARNESS)



STANDARD MOUNTING: M5 X 0.8 X 30 PAN HEAD SCREWS RECOMMENDED.
OPTIONAL MOUNTING: M7 X 1 X 30 PAN HEAD SCREWS WITH NUTS RECOMMENDED.

CHINA: 1288 KANGQIAO EAST ROAD, 201319 PUDONG, CHINA // T: +86 21 581 34411

EUROPE: HLAVNÁ 48, 952 01 VRÁBLE, SLOVAKIA // T: +42 1 377 911 542

NORTH AMERICA: 300 SOUTH COCHRAN PO BOX 588 WILLIS, TX 77378, USA // T: +1 936 856 2971

WWW.KONSGBERGAUTOMOTIVE.COM