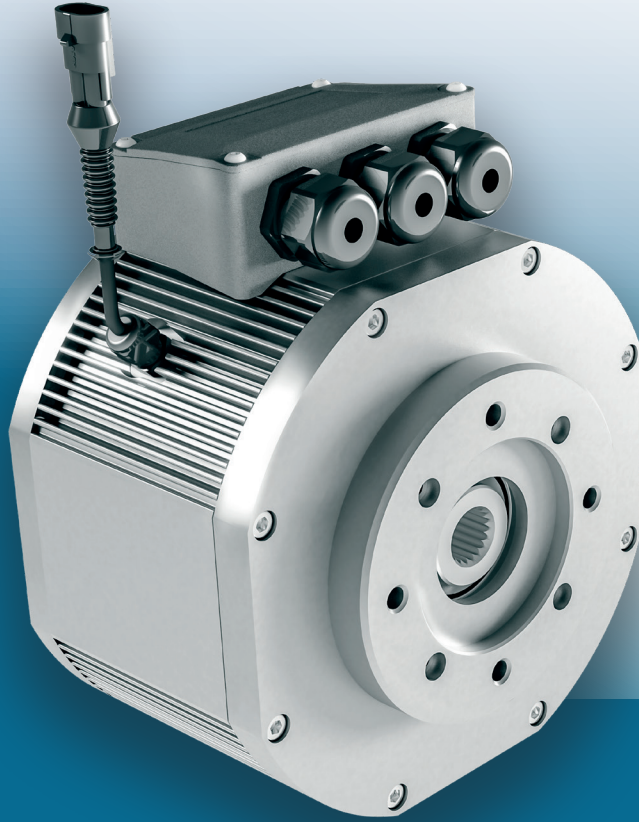




COMER INDUSTRIES CORPORATION



**SMAC** SERIE

## NEXT-GEN ELECTRIC MOTORS

SYNCHRONOUS IPM

SCALABLE DESIGN

WATERPROOF

HIGH POWER DENSITY

### *Lightness Strikes Again.*

More Performances, More Efficiency, More Compactness, SMAC Serie is the solution for all vehicle classes: scalable and flexible these motors are designed for the most demanding uses.

SMAC Serie motors have 50 percent less mass and volume than traditional ones, with 25 percent more capability.

Contact us in order to verify technical specs.

[www.benevelli.it](http://www.benevelli.it)

Power (continuous) from **0,5 to 110kW**

Voltage from **24 to 800V**

IP Protection from **54 to 6K9K**

Max Speed **10.000rpm**

Efficiency Peak **96%**