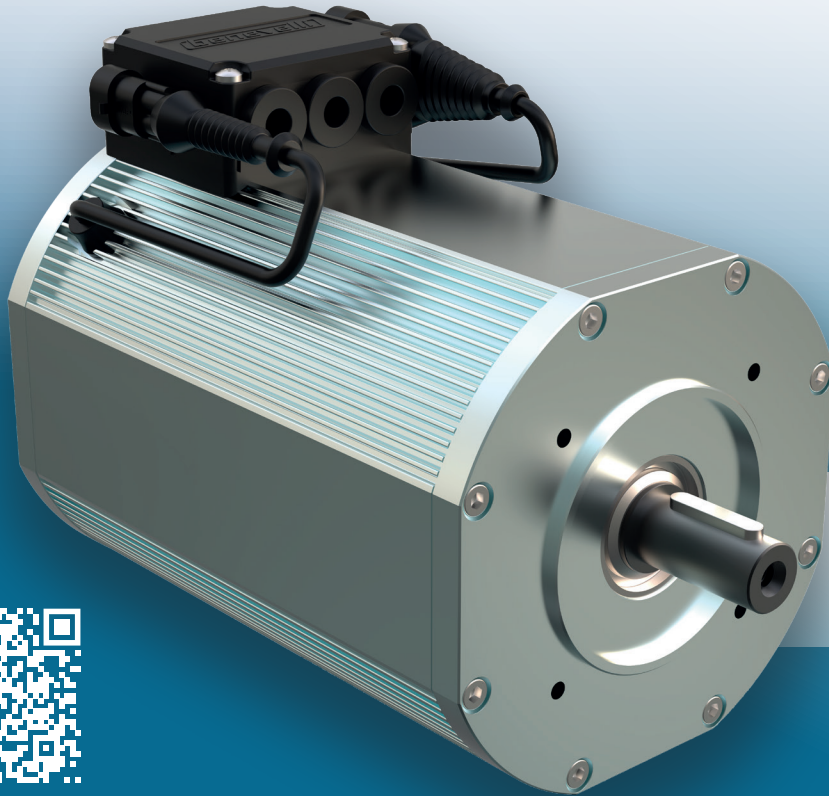




COMER INDUSTRIES CORPORATION



AMAC SERIE

ASYNCHRONOUS MOTORS RE-INVENTED

Unparalleled Flexibility.

AMAC is the electric motor serie you've always desired, highly industrialized, scalable and adapted for any vehicle class.

AMAC Serie motors are applicable to traction, steerings, hydraulic pumps and are also available with IEC and NEMA flanges.

Contact us in order to verify technical specs.

www.benevelli.it

MODULAR DESIGN

LOW TO HIGH VOLTAGE

WATERPROOF

EMB READY

Power (continuous) from **0,3** to **100**kW

Voltage from **24** to **800**V

IP Protection from **54** to **67**

Max Speed **10.000**rpm

Efficiency Peak **88%**